

Case Study



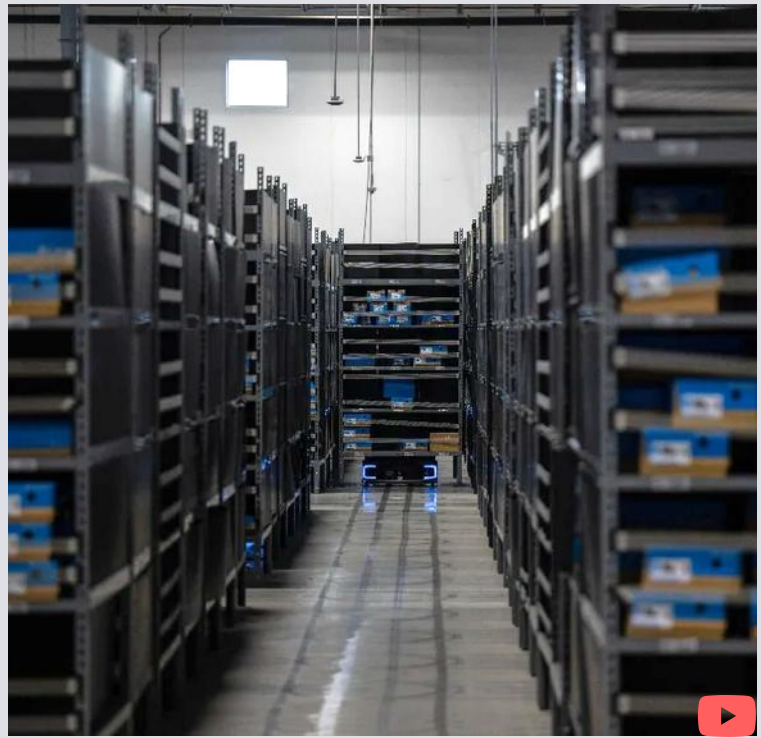
3PL

P800

Shelf-to-Person

The Challenge

- Space Constraints: Needed to reconfigure the warehouse to accommodate new products.
- Scalability: Required expanded automation to meet growing customer demand.
- Operational Continuity: Ensured minimal disruption during layout changes.



Geek+ Solution

- Solution Deployed: Shelf-to-Person
- Rapid Relocation: Moved 1,018 racks in under four hours, minimizing downtime.
- Integrated Systems: Combined existing standard automation with the new PopPick solution to handle diverse product categories.
- Flexible Layout: Enabled adjustments without infrastructure changes, ensuring scalability.

Geek+ Impact

- Scalability: Easily adapted to UPS's growing business needs.
- Flexibility: Adjusted automation layout without facility modifications.
- Continuity: Ensured smooth operations during reconfiguration.
- Versatility: Supported multiple clients with varied product categories in one system.

About Customer

- Comprehensive Services: UPS Supply Chain Solutions specializes in logistics, distribution, and transportation.
- Customer-Centric: Focused on enhancing business performance through tailored solutions.