

## Case Study



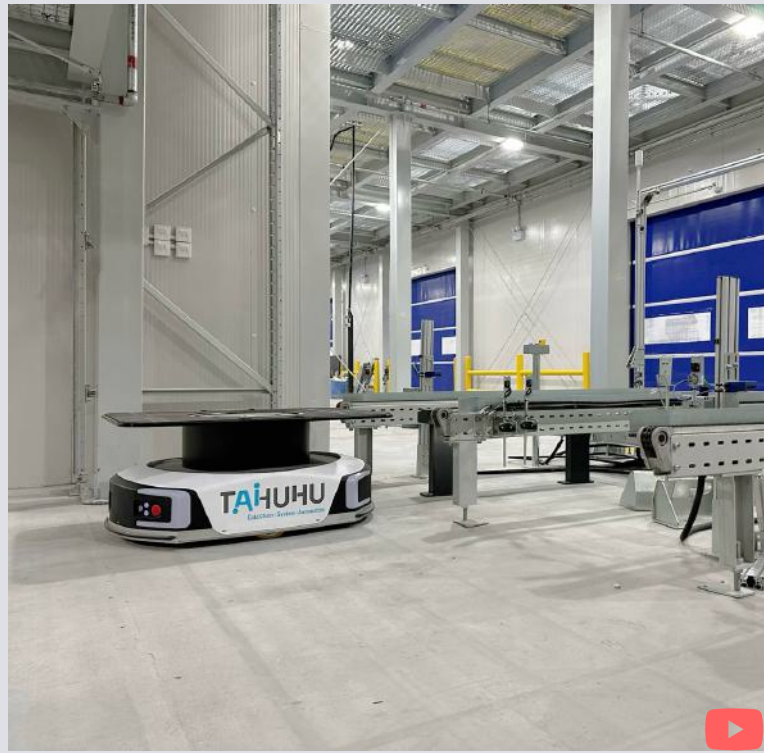
Cold-Chain

SkyCube

Pallet-to-Person

### The Challenge

- Labor Strain: Employees struggled to work efficiently in freezing conditions.
- Delivery Pressure: Rising demand required faster, streamlined operations.
- Precision: Errors in handling sensitive goods risked costly losses.



### Geek+ Solution

- Solution Deployed: Pallet-to-Person
- 4-Way Shuttle Trucks: Scalable vehicles optimized goods transport.
- Goods-to-Person Stations: Enabled accurate picking in controlled environments.
- Temperature-Controlled Docks: Maintained product integrity during loading.



Geek+ has revolutionized our operations. From warehousing to delivery, their seamless technology ensures low-temperature preservation across all processes. Managing three temperature zones is no longer a challenge.

### Geek+ Impact

- Efficiency: Reduced labor by 60% with automation.
- Accuracy: Achieved 99.99% order precision.
- Capacity: Increased storage by 30%.
- Continuity: Enabled 24/7 operations to meet demand.
- Satisfaction: Faster deliveries boosted customer trust.



### About Customer

- Industry Leader: TAHUHU supports frozen food, fresh produce, dairy, and retail.
- Commitment to Quality: Ensures safe, reliable delivery across temperature zones.
- Scale: Operates a vast network for sensitive product logistics.

Contact Us

View Case Online

